



SAP® Digital Supply Chain

SAP SCM Consulting Solutions

Extended ATP

Stefanie Fischer, SAP | Knut Krampitz, SAP
December 3, 2020

PUBLIC

Inventory Optimization Webinar Series 2020

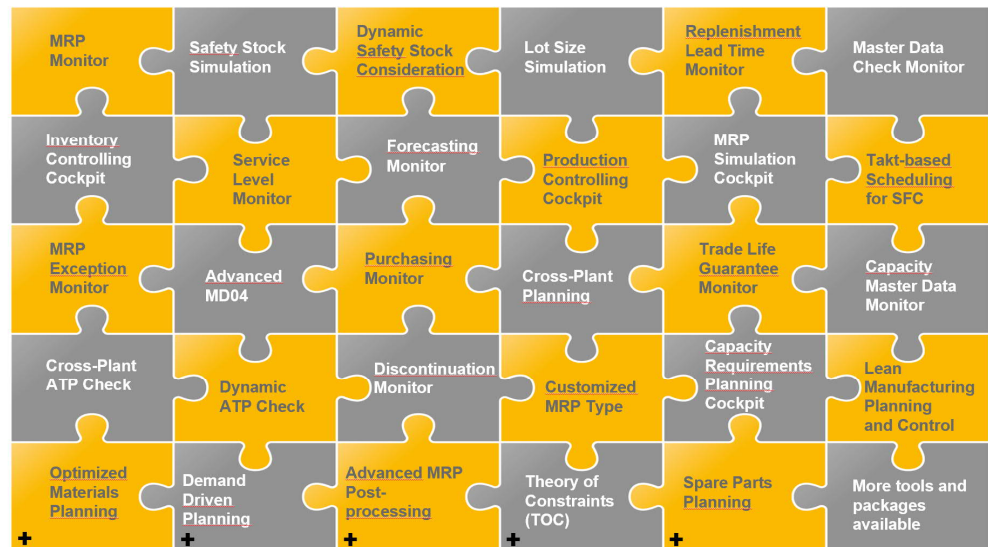
Topic	Date	German (CEST)	English (CEST)
Inventory Optimization with SAP-Solutions incl. Live Demo	08.10.2020	9.00-10.00	15.00-16.00
Demand-Driven Planning	15.10.2020	9.00-10.00	15.00-16.00
Extended Production Planning	22.10.2020	9.00-10.00	15.00-16.00
Theory of Constraints	29.10.2020	9.00-10.00	14.00-15.00
Supply Chain Controlling	05.11.2020	9.00-10.00	14.00-15.00
Advanced MRP Postprocessing	12.11.2020	9.00-10.00	14.00-15.00
Shelf Life Planning	19.11.2020	9.00-10.00	14.00-15.00
Advanced Purchasing	26.11.2020	9.00-10.00	14.00-15.00
Extended ATP	03.12.2020	9.00-10.00	14.00-15.00
Catalog buying with Lean Catalog	10.12.2020	9.00-10.00	14.00-15.00

Agenda

1. Introduction to SAP SCM CS
2. SCM CS: Dynamic ATP Check
3. SCM CS: Cross Plant ATP Check
4. SCM CS: Capable-to-Confirm



SCM Consulting Solutions for ECC and S/4HANA



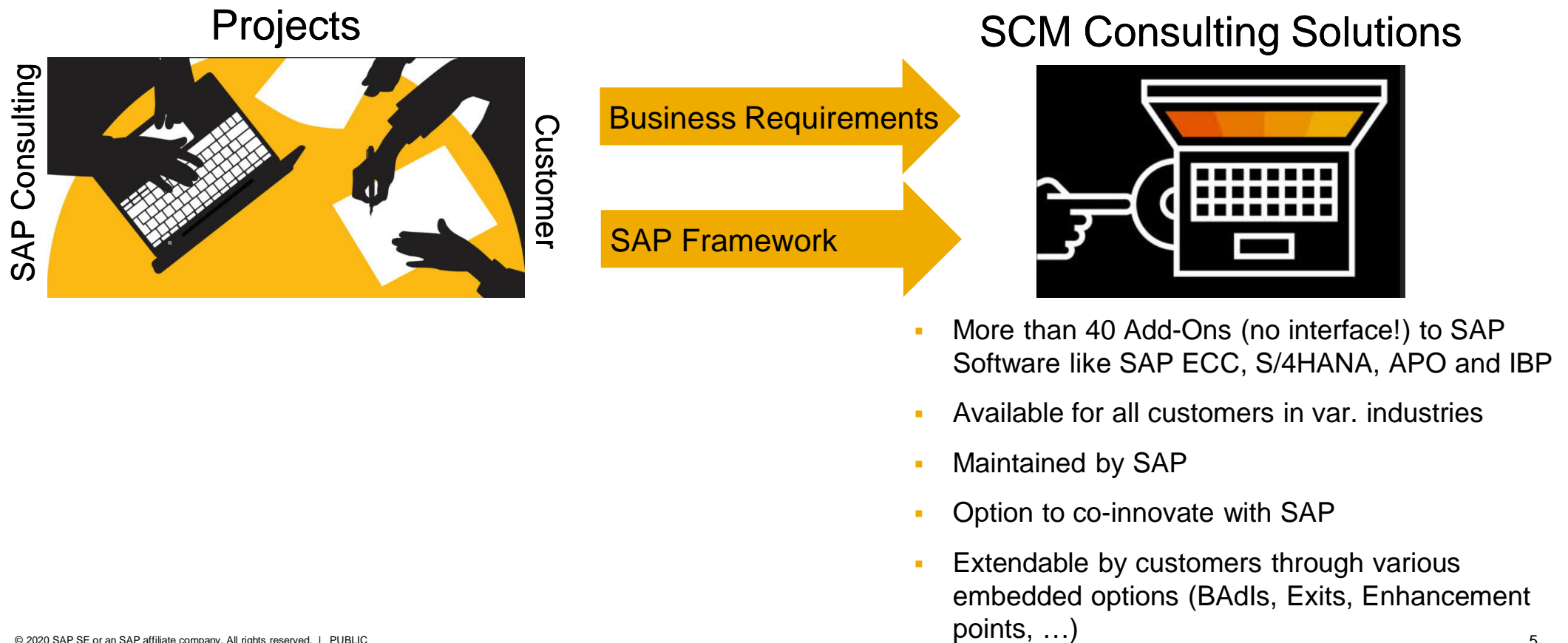
+ Packages to cover full processes

<https://help.sap.com/viewer/p/SCMCSALL>

www.sap.de/inventoryoptimization

SCM-Consulting-Solutions@sap.com

Concept of the SCM Consulting Solutions of SAP

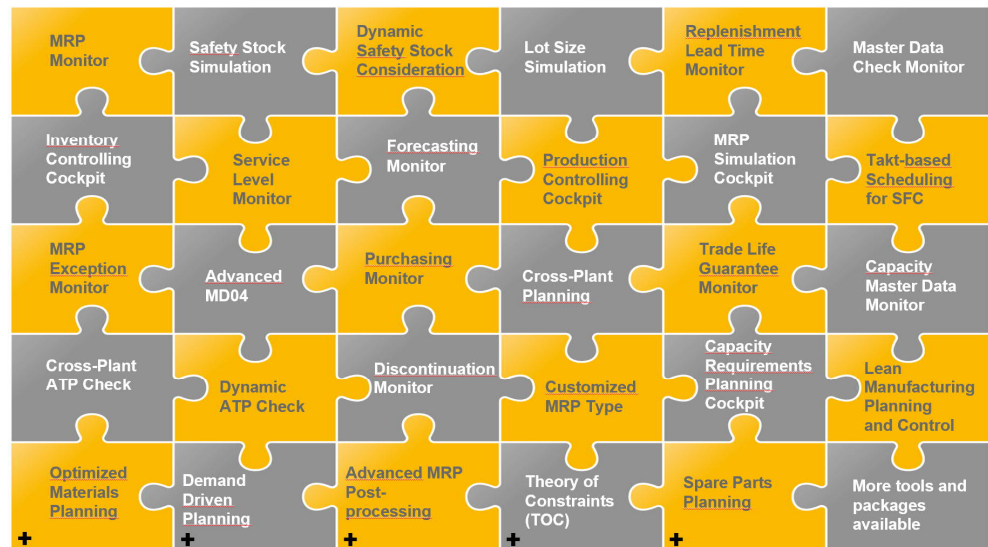


Agenda

1. Introduction to SAP SCM CS
2. **SCM CS: Dynamic ATP Check**
3. SCM CS: Cross Plant ATP Check
4. SCM CS: Capable-to-Confirm



SCM Consulting Solutions for ECC and S/4HANA



+ Packages to cover full processes

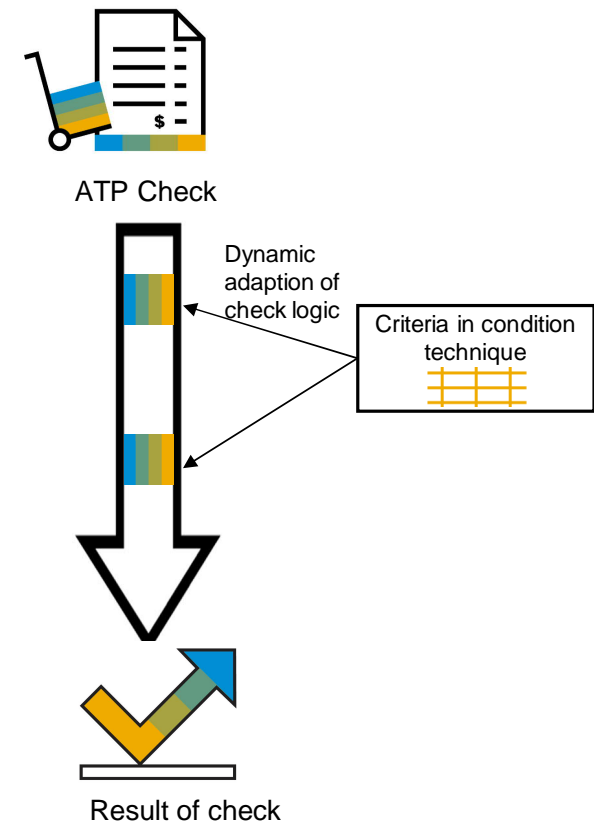
<https://help.sap.com/viewer/p/SCMCSALL>

www.sap.de/inventoryoptimization

SCM-Consulting-Solutions@sap.com

SCM Consulting Solution: Dynamic ATP Check

- Dynamic ATP Check (DAC) is an extension to Standard ECC and S/4HANA ATP
- The Consulting Solution offers a dynamic adaption of the check logic based on the object's criteria
- The realization using two components
 - Condition technique as rule-based control
 - ATP Check logic as framework
- Concept of a dynamic ATP Check:
 - Before ATP: Impact on execution of the check, e.g. check with and without safety stock
 - After ATP: Adjustment of the result, e.g. reduction of confirmed quantity

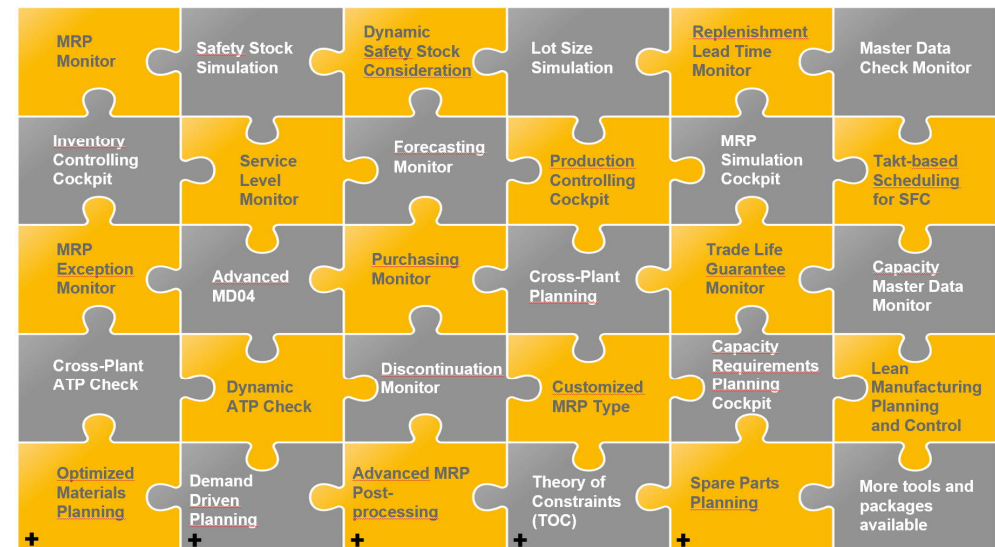


Agenda

1. Introduction to SAP SCM CS
2. SCM CS: Dynamic ATP Check
3. **SCM CS: Cross Plant ATP Check**
4. SCM CS: Capable-to-Confirm



SCM Consulting Solutions for ECC and S/4HANA



+ Packages to cover full processes

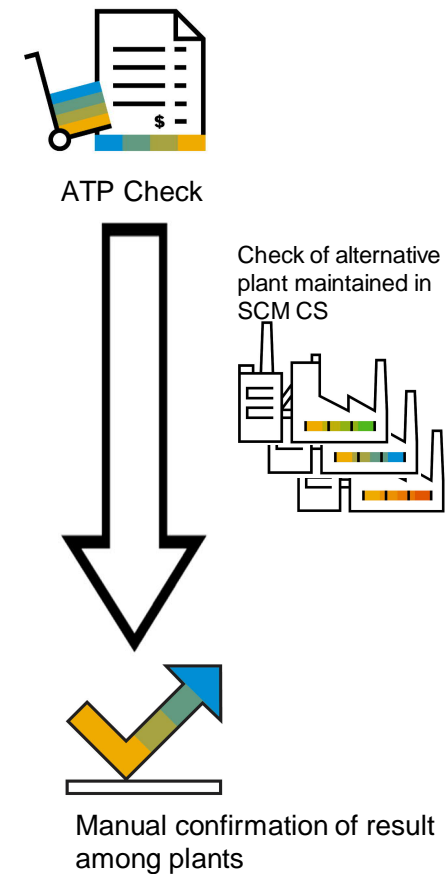
<https://help.sap.com/viewer/p/SCMCSALL>

www.sap.de/inventoryoptimization

SCM-Consulting-Solutions@sap.com

SCM Consulting Solution: Cross Plant ATP Check

- Cross Plant ATP Check is an extension to Standard ECC ATP
- The Consulting Solution provides a plant determination by ATP-situation
- The determination is triggered during creation and change of sales order items
- Execution of a new determination for existing items

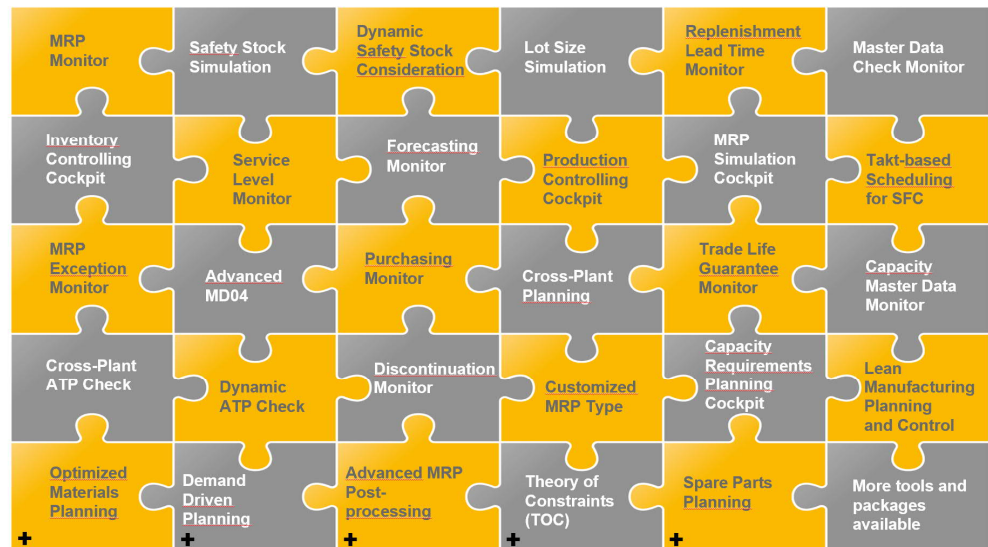


Agenda

1. Introduction to SAP SCM CS
2. SCM CS: Dynamic ATP Check
3. SCM CS: Cross Plant ATP Check
4. **SCM CS: Capable-to-Confirm**



SCM Consulting Solutions for ECC and S/4HANA



+ Packages to cover full processes

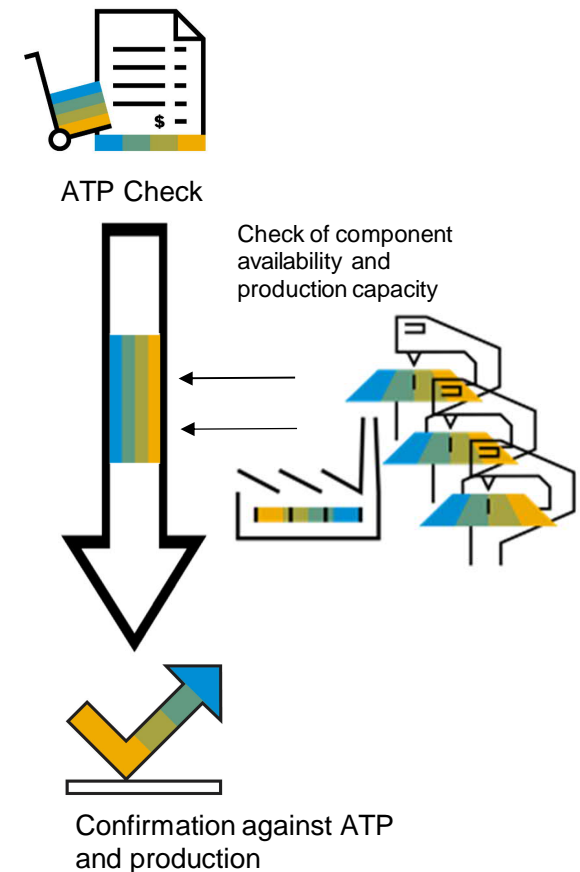
<https://help.sap.com/viewer/p/SCMCSALL>

www.sap.de/inventoryoptimization

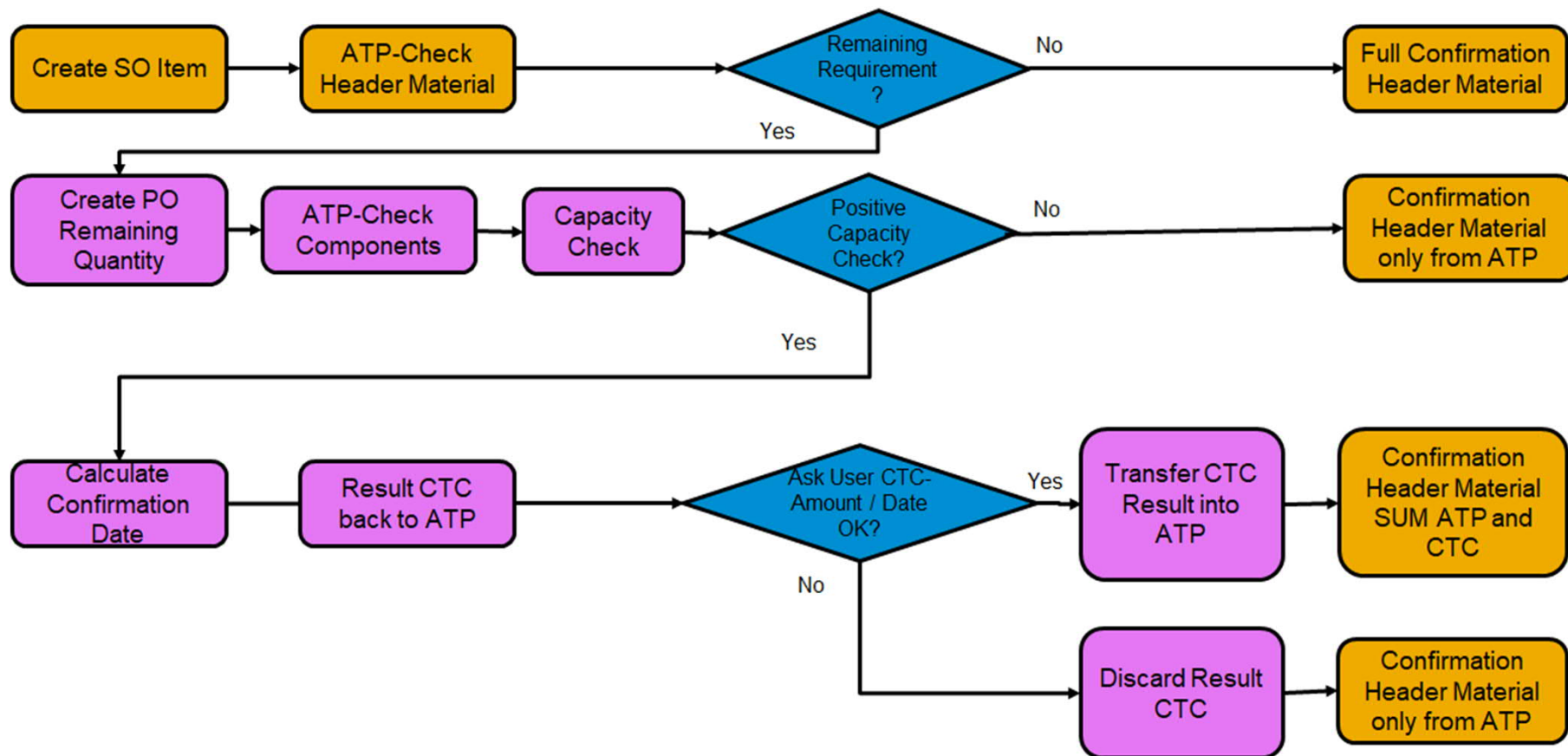
SCM-Consulting-Solutions@sap.com

SCM Consulting Solution: Capable-to-Confirm

- CTC is an extension to Standard ECC and S/4HANA ATP
- In case of lacking material availability no detailed delivering date can be given to customers immediately via standard product availability check
- CTC gives immediate transparency on material availability and production capacity which means an advantage in competition markets
- If no ATP is available, CTC looks for free capacity and schedules a simulated production planned order. This order is used in sales order item for determination of confirmation date.



SCM Consulting Solution: Capable-to-Confirm Process



Thank you.

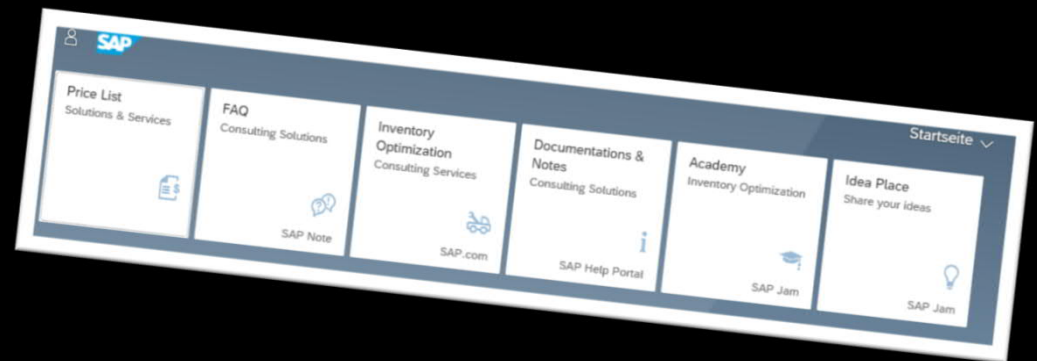
Contact information:

Stefanie Fischer
Business Processes Senior Consultant
Supply Chain Management
SAP Consulting
Stefanie.fischer01@sap.com

Knut Krampitz
Business Processes Senior Consultant
Supply Chain Management
SAP Consulting
Knut.krampitz@sap.com

Visit us:

www.sap.com/scmcs



Write us:

SCM-Consulting-Solutions@sap.com

© 2020 SAP SE or an SAP affiliate company. All rights reserved.

© 2020 SAP SE or an SAP affiliate company. All rights reserved.

No part of this publication may be reproduced or transmitted in any form or for any purpose without the express permission of SAP SE or an SAP affiliate company.

The information contained herein may be changed without prior notice. Some software products marketed by SAP SE and its distributors contain proprietary software components of other software vendors. National product specifications may vary.

These materials are provided by SAP SE or an SAP affiliate company for informational purposes only, without representation or warranty of any kind, and SAP or its affiliated companies shall not be liable for errors or omissions with respect to the materials. The only warranties for SAP or SAP affiliate company products and services are those that are set forth in the express warranty statements accompanying such products and services, if any. Nothing herein should be construed as constituting an additional warranty.

In particular, SAP SE or its affiliated companies have no obligation to pursue any course of business outlined in this document or any related presentation, or to develop or release any functionality mentioned therein. This document, or any related presentation, and SAP SE's or its affiliated companies' strategy and possible future developments, products, and/or platforms, directions, and functionality are all subject to change and may be changed by SAP SE or its affiliated companies at any time for any reason without notice. The information in this document is not a commitment, promise, or legal obligation to deliver any material, code, or functionality. All forward-looking statements are subject to various risks and uncertainties that could cause actual results to differ materially from expectations. Readers are cautioned not to place undue reliance on these forward-looking statements, and they should not be relied upon in making purchasing decisions.

SAP and other SAP products and services mentioned herein as well as their respective logos are trademarks or registered trademarks of SAP SE (or an SAP affiliate company) in Germany and other countries. All other product and service names mentioned are the trademarks of their respective companies.

See www.sap.com/copyright for additional trademark information and notices.