

Beneficiary Impact

The SAP Social Sabbatical Program creates a ripple effect of positive impacts for the beneficiaries of the social sector client participants.



83%

of beneficiaries experience positive impacts by gaining access to the partner's program for the first time.

58%

of all beneficiaries report an increase in business revenue or income.



77%

of beneficiaries report improvements in quality of life.



65%

of the beneficiaries now garner more respect within their households because of Partners' program/service.

Entrepreneurship

The top reported quality of life enhancement is improvement in **skills and knowledge**.

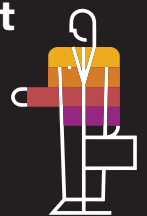
About **2 in 3** beneficiaries of entrepreneurship partners agree that their business has grown because of the program.



Workforce Development

The top reported quality of life improvement is **professional growth**.

90% of beneficiaries of Partners in Workforce Development report acquiring new skills and the capability to get a better job in the future.



It opened many doors for me professionally – how to behave in a company, what to wear and what to say. I've already worked in two places after leaving CEDUC. – Beneficiary, 21, gained full-time employment

I have a brand-new vision for my life and future. I have more self esteem and confidence in myself and my abilities. – Beneficiary, 20, gained first-time employment

