

On-Site Guide



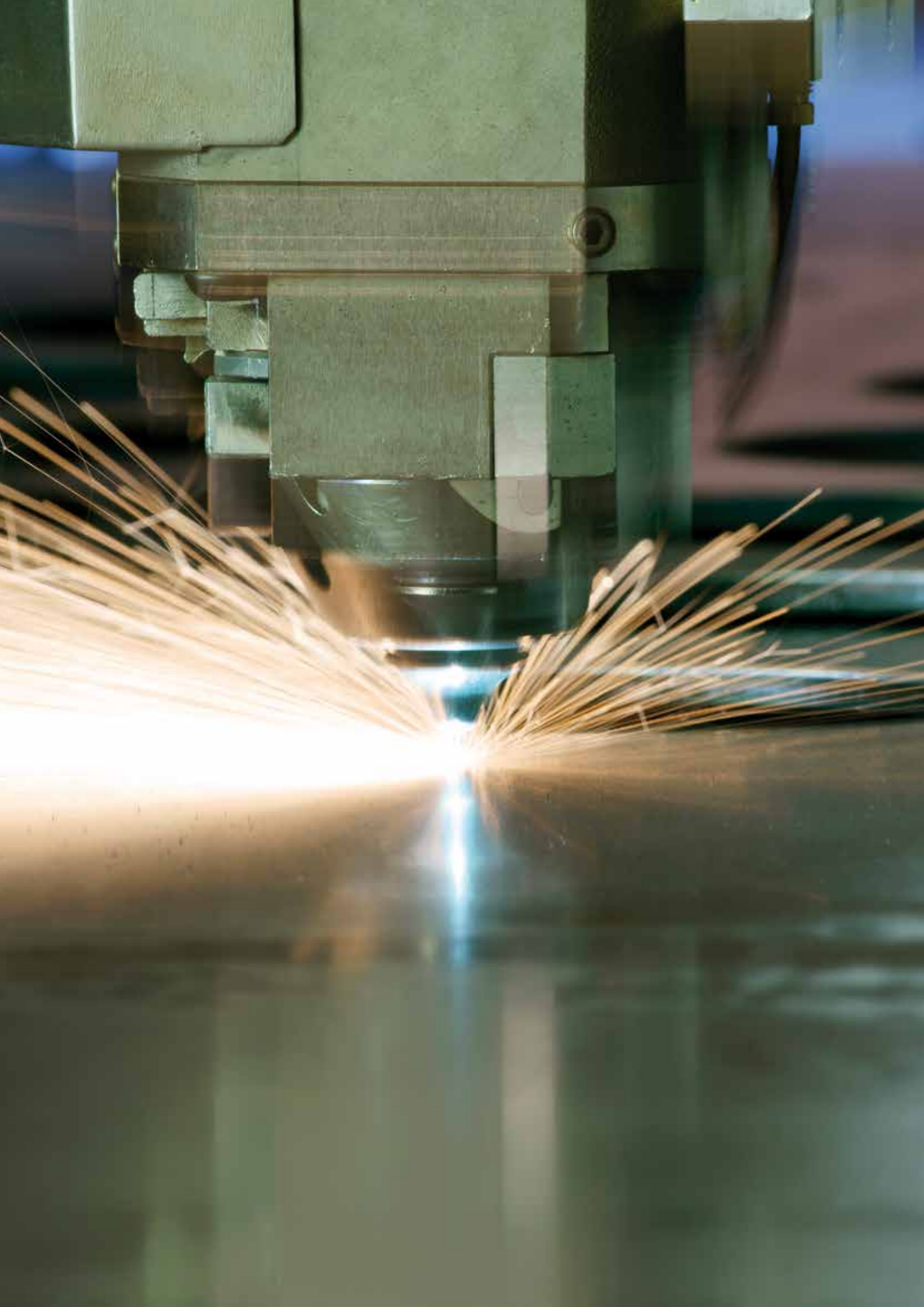
SAP PLM Info Days

April 16-17th 2019

SAP University
Building ROT03
Audimax
SAP-Allee 27 (Raiffeisenring 37)
68789 St. Leon-Rot

THE BEST RUN





Welcome

Digital processes are the prerequisite for new business models and innovative products. The rapid technology shift and the increasing demand of electronic and software components in products also increase the complexity of modern systems.

The SAP PLM Info Days provide answers to these challenges:

- How do you manage the increasing volume of complexity of your systems?
- How do you ensure efficient control of development projects and robust change management with deep integration to manufacturing and service?
- How requirements management and systems engineering during product development and throughout its downstream processes led to innovative products

Learn about the latest innovative and impressive project reports of our customers. Take the opportunity to share experiences with other customers and understand how innovative technologies such as machine learning can make your PLM processes intelligent.

Kind regards,

Dr. Christoph Rzehorz
SAP PLM Principal
SAP Deutschland SE & Co. KG

Petra Koepfer-Behncke
Head of PLM Global Outbound Product Management and GTM
SAP SE

Program Overview

KEYNOTES AND PRESENTATIONS FROM SAP

CUSTOMERS

You will learn:

- The importance of PLM for new business models and how to create added value for your company
- The digitization strategy of HILTI and the meaning for PLM
- How Mercedes Benz manages product costs along the entire development process

BREAKOUT SESSIONS

On the first day you will gain insights into the current portfolio of SAP PLM. Customers from different industries will present their solutions and projects in four breakout sessions. These sessions will provide you with a deep dive into the meaning and features of SAP PLM and our customers share their stories on how they connect engineering to their enterprise processes with integrated product data management.

The focus on day two will be new solution concepts and products with presentations represented by our development teams which are spread across four tracks. It will be an opportunity for you to talk to us about the options for digitalizing your product development processes.

STRATEGY & ROADMAP

See which opportunities are opening up with the SAP S/4 HANA strategy and the SAP PLM roadmap and how you can utilize the SAP PLM portfolio for your purpose and requirements in discrete manufacturing or process industries.

EXHIBITION

SAP Digital Business Services and SAP Partners present new developments, complementary solutions and reliable competence in SAP PLM projects. The exhibitors are looking forward to your visit.

SHOWCASES

trinckle 3D GmbH

CAD-based design automation and advanced product configuration. In our showcase we present a new design paradigm: the automation of CAD-based designing. Learn how to automate often used tools and parts for Automotive, Production or Medtech. Get inspired how you can benefit from this solution no matter if you are designing robotic grippers, mould tools, orthotics or automotive interior parts.

Experience a Digital Twin in Virtual Reality

Put on a Virtual Reality headset, enter the Asset Showroom and explore a Digital Twin with your own hands. The product data is streamed from the SAP Asset Intelligence Network into a Windows Mixed Reality application build with Unity. Understand how easy it is to offer the same experience to your customers.

Visual Experience

The visitor navigates through the showcase by means of eye-control. The interactive scenarios allow the visitor to dive into the Design-to-Operate process, where he/she learns how the intelligent Evoguard valve goes through the entire process. He/she is supported by the SAP CoPilot, which makes the scenarios largely self-explaining.

Design: An Agile Way to Create and Develop Products

In our showcase, a customer requests a product modification. Based on live operational data, the customer has identified optimization potential and communicates their requirements to the design team.

GUIDED TOURS

We are offering Guided Tours across the exhibition ground to give you better insights into the expertise of our partners. The following tours are available:

SAP PLM Info Days

Day 1:

09:00 a.m. - 09:30 a.m. | Guided Tour 1
(P&PM, DSC, LeverX, SEAL, .riess, allvisual, SAP Digital Business Services)

12:00 p.m. - 12:30 p.m. | Guided Tour 2
(EXA, CADENAS, CENIT, MHP, XPLM, CIDEON, invenio)

Day 2:

08:30 a.m. - 09:00 a.m. | Guided Tour 1
(EXA, CADENAS, CENIT, MHP, XPLM, CIDEON, invenio)

12:30 p.m. - 1:00 p.m. | Guided Tour 2
(P&PM, DSC, LeverX, SEAL, .riess, allvisual, SAP Digital Business Services)

Guided Tours start at the entrance on the ground floor next to the registration desk. To participate, simply be there on time and pick-up your headphones for the tour at the desk.

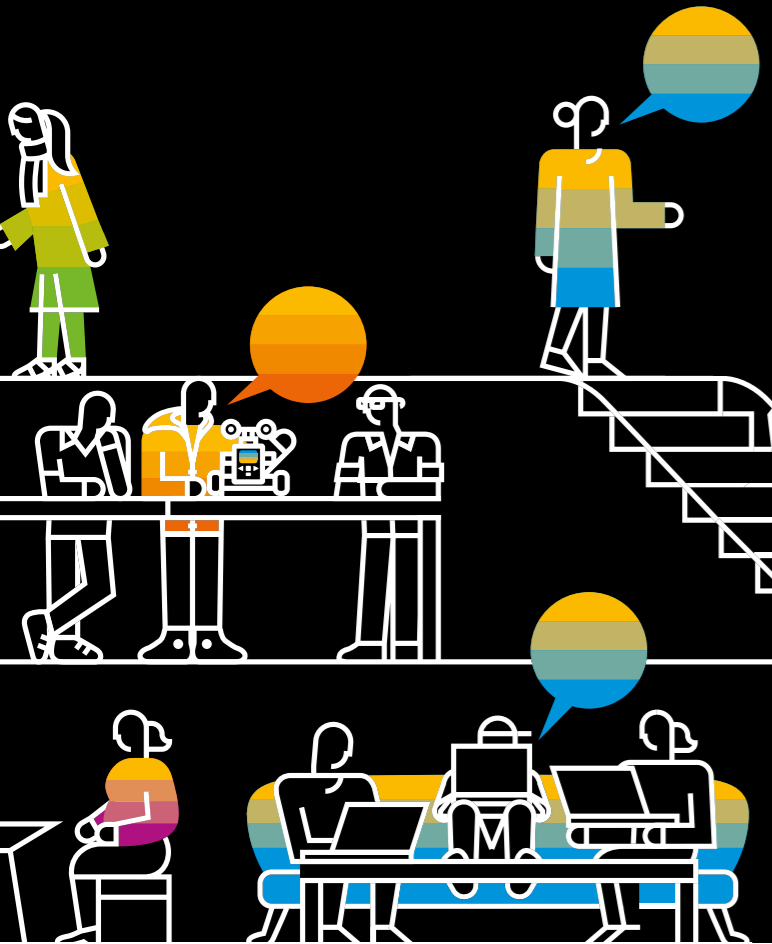
INNOVATION DAY

The second day provides you with a variety of breakout sessions and a Development Market Place.

You can join short 45 min presentations in which product owners and developers give insights into their current developments. The breakout sessions include 4 different tracks:

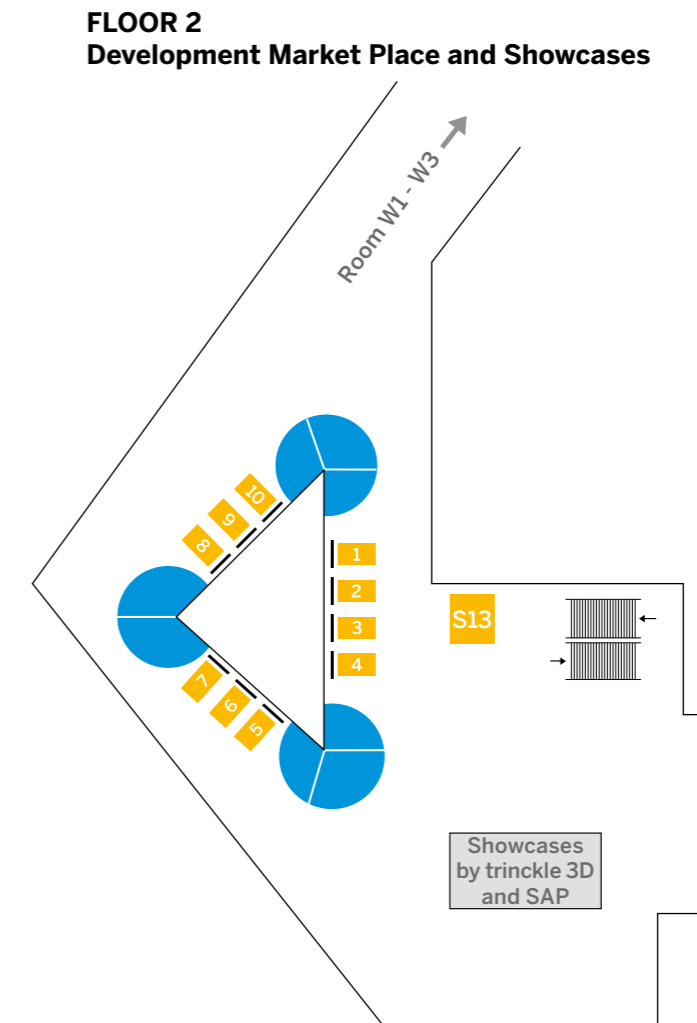
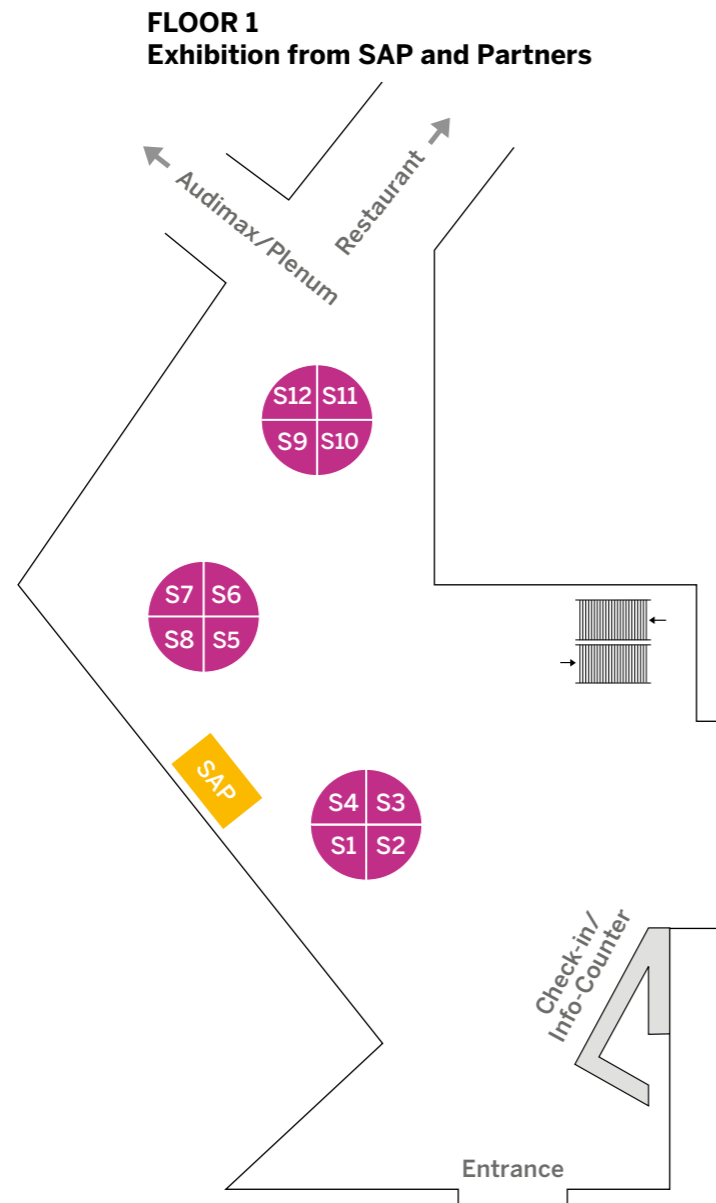
1. Product Lifecycle Management for Discrete Industries
2. SAP EPPM & Advanced Variant Configuration
3. Cross Topics
4. Product Insights & Roadmaps

Come and meet them throughout the day at their booths in the Development Market Place. The product owners and developers are happy to have in-depth demos with you and are curious to take your feedback with open ears.



Floor Plans

SAP and Partner



Development and Partner Market Place

Meet SAP Digital Business Services and our partners in the exhibition on the ground floor and our product owners and developers in the Development Market Place area on the top floor.

The exhibition and the Development Market Place are open continuously during both days.

Exhibition from SAP and Partners

S1	P&PM Solutions & Consulting GmbH	S8	MHP Management- und IT-Beratung GmbH
S2	EXA Deutschland GmbH	S9	.riess engineering europe gmbh
S3	DSC Software AG	S10	XPLM Solution GmbH
S4	CADENAS GmbH	S11	allvisual ag
S5	LeverX International	S12	CIDEON Software & Services GmbH & Co. KG
S6	CENIT AG	SAP	SAP Digital Business Services R&D/ Engineering
S7	SEAL Systems AG		

Development Market Place and Showcases

1	SAP Enterprise Portfolio and Project Management	7	Enterprise Content Management
2	SAP Product Lifecycle Costing	8	SAP Engineering Control Center
3	Collaboration with SAP S/4HANA Cloud for intelligent product design	9	SAP Predictive Engineering Insights
4	Systems Engineering with SAP S/4HANA Cloud for intelligent product design	10	Product Lifecycle Management in Discrete Industries
5	Digital Configuration Lifecycle	S13	invenio Systems Engineering GmbH
6	SAP Asset Intelligence Network		

Agenda

Day 1

08:00 am	Check-in & Breakfast			
09:00 am	Guided Tour			
10:00 am	Welcome Marvin Christe, SAP			
10:15 am	When Engineering meets Digitalization – Recognize Potential & Create Success Nils Herzberg, Senior Vice President, SAP			
11:00 am	Hilti – Our journey to digital take-off Markus Hüsches Karl-Heinz Hessler, Hilti			
11:45 am	From the First Cost Estimate to the Strategic EBIT line – PLC at Mercedes Benz Christoph Streuber, Alexander Viezens, Daimler AG			
12:00 pm	Lunch & Guided Tour			
	Breakout A: Engineering Audimax	Breakout B: Systems Engineering & SAP EPPM Room W1	Breakout C: Cross Topics Room W2	Breakout D: Digital Twin Room W3
02:00 pm	A1 SAP Model Company with SAP S/4HANA® and PLM Elke Wimmer, Andreas Breckel, OSRAM Continental GmbH	B1 Systems Engineering at KRONES AG – Height Adjustment in the Spotlight Thomas Islinger, Krones AG	C1 Configuration in the Digital Lifecycle – a real life example Stefan Röhl, Maschinenfabrik Reinhausen GmbH	D1 Digital Twins Inside Equipment Lifecycle at Ypsomed Fernand Portenier, Ypsomed AG
02:45 pm	Break & Networking			
03:00 pm	A2 How Global Development Teams of KION Group manage Product Variants Moritz Dyroff, KION Group AG Jens Schirpenbach, PM & Partner Marketing Consulting GmbH	B2 Product Structures as a basis for Scheduling in PPM Marit Frenzel, HELLA GmbH & Co. KGaA	C2 Customer Presentation on Product Development in Plant Engineering Kay Michael Goertz, Susanne Jene, thyssenkrupp	D2 "iXworld" The Digital Service Platform by INDEX Werner Bothe, INDEX-Werke GmbH & Co. KG
03:45 pm	Break & Networking			
04:00 pm	A3 Mechanics and Electronics – Two worlds, one target: Collaborative development with SAP PLM at Wilo SE Benjamin Eilebrecht, Matthias Reinelt, WILO SE	B3 VisionOne PPM Global SAP PPM Transition at Festo IT Martin Baldinger, Festo AG & Co. KG	C3 Product Development in the Cloud Maximilian Schneider, Vice President PLM Core, SAP	D3 Digitalization – Market Opportunities Change of a traditional Company Markus Telian, Hoval AG
04:45 pm	Digital Product Lifecycle Management – SAP's Strategy & Road Map Dr. Jürgen Weiner, Senior Vice President, SAP			
From 05:30 pm	Get-Together & Dinner			

Agenda

Day 2

08:30 am	Guided Tour			
09:00 am	Welcome & Overview			
	Breakout E: Product Lifecycle Management for Discrete Industries Audimax	Breakout F: SAP EPPM & Advanced Variant Configuration Room W1	Breakout G: Cross Topics Room W2	Breakout H: Product Insights & Roadmaps Room W3
09:45 am	E1 Unlock new & unexplored doors with the key to your digital twin – SAP Engineering Control Center Gerhard Himmelsbach	F1 Combine project management contradictions: Agile under the waterfall Volker Faisst	G1 Simulative cost planning for a single product up to the complete portfolio Petra Koepfer-Behncke & Dirk Loeffelbein	H1 The game plan for Enterprise Content Management Markus Pipp & Victor Wündisch
10:45 am	E2 The backbone of your product with Enterprise Product Structure by SAP Jochen Schrempf	F2 All you need to know about SAP Enterprise Portfolio and Project Management on OnPremise & Cloud Renato Zadro	G2 Design to Cost – SAP Product Lifecycle Costing – Highlights, Roadmap, New Cloud Edition Julian Mayer & Katarzyna Maciak	H2 Gather all you need to know on SAP's Digital Configuration Lifecycle Isabel Kremers
11:45 am	E3 Manage complexity and bring all disciplines together with Systems Engineering when driving New Product Development Carsten Dietze-Selent	F3 The way intelligent technologies & machine learning help companies in PLM to become an intelligent enterprise Petra Meyer	G3 Manage intelligent products from design to asset operations in a close loop Carsten Dietze-Selent & Robert Andereg	H3 Learn how you can start your PLM cloud journey with SAP S/4HANA Bianca Duse
12:30 pm	Lunch & Guided Tour			
02:00 pm	E4 In the world of mechatronics: How does one deal with software? Jens Griessmann	F4 Build configurable mechatronic products with SAP S/4HANA Cloud for intelligent product design & SAP S/4HANA for advanced variant configuration Johann Dornbach & Carsten Dietze-Selent	G4 How to handle change with collaboration across your extended supply chain? Attila Sellyei & Jochen Steinbach	H4 Experience a digital twin in virtual reality Michael Spiess
02:45 pm	Break & Networking			
03:15 pm	E5 The vision for the intelligent enterprise, driving value creation by providing a seamless digital thread between Engineering & Industrial Asset Management Andre Gajda	F5 Boost your knowledge on the integration of Advanced Variant Configuration to SAP C/4HANA Configure, Price & Quote (CPQ) and Commerce Karlheinz Agsteiner	G5 Gain knowledge on supplier collaboration with SAP & how it can benefit your supply chain management Vinay V	H5 Automate your CAD designing: Let algorithms do the work for you – SAP Engineering Control Center Florian Reichle, trinckle 3D GmbH
04:15 pm	Wrap-Up			

allvisual ag
allvisual – your Consulting Partner for Digital Transformation and Smart Manufacturing based on Best Practice PLM Expertise along the extended Supply Chain.
www.allvisual.ch

CADENAS GmbH
CADENAS is a leading software developer in the areas of Strategic Parts Management (PARTsolutions) and Electronic Product Catalogs (eCATALOGsolutions).
www.cadenas.de

CENIT AG
CENIT is your partner for successful Digital Transformation. Our strength? Innovative solutions for PLM, Digital Factory and Enterprise Information Management.
www.cenit.com

CIDEON Software & Services GmbH & Co. KG
CIDEON provides advice and support to businesses on implementing innovation and optimising engineering processes to raise performance and business value.
www.cideon.de

DSC Software AG
SAP Platinum Partner DSC Software AG integrates authoring tools and systems for Industry 4.0 in SAP PLM. With SAP Engineering Control Center and needs-based add-ons.
www.dscsag.com

EXA Deutschland GmbH
EXA, a technology-driven boutique consulting and solutions company, focused on Process Data Engineering, Financial Management Transformation and Advanced Analytics.
www.exa-ag.com

invenio Systems Engineering GmbH
Consulting in the area digitalization of the product development process. Coaching for digital tool chain, project support in requirements and systems engineering.
www.invenio.net

LeverX International
LeverX is a preferred SAP vendor and one of the industry leaders in consulting and implementation services for SAP PLM, PPM, Visual, RD, VC, EHS, and SAP eSCM solutions.
www.leverx.com

MHP Management- und IT-Beratung GmbH
MHP is the premium business and technology partner shaping the future of mobility and manufacturing along the engineering value chain and network.
www.mhp.com

P&PM Solutions & Consulting GmbH
P&PM supports you in transitioning your operations to manage the growing complexity of embedded software in your products – across the product lifecycle.
www.p-and-pm.com

.riess engineering europe gmbh
.riess engineering is the strategic development partner for the SAP ECTR interfaces to PTC® Creo® & Windchill®, specialized in integrating PTC® solutions in SAP PLM.
www.riess.de

SEAL Systems AG
SEAL Systems offers process optimization solutions for corporate output management, conversion, SAP, PLM, automatized documentation and technical communication.
www.sealsystems.de

XPLM Solution GmbH
As an independent IT service provider and system integrator in the PLM sector XPLM offers various integration solutions to SAP PLM.
www.xplm.com

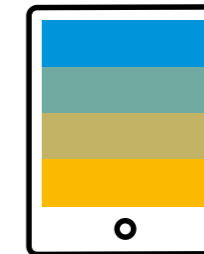
SAP Deutschland SE & Co. KG
SAP Digital Business Services R&D/ Engineering provides comprehensive consulting and implementation services with Best Practice solutions for SAP PLM, SAP EPPM, SAP Product Lifecycle Costing, Visual Enterprise and all related topics.
www.sap.de

MEETING LOCATION

April 16-17, 2019
SAP University, Building Rot 3
Plenary: Audimax
SAP-Allee 27 (Raiffeisenring 37)
68789 St. Leon-Rot
Parking space P5

EVENING EVENT

April 16, 2019
Dinner time: 7 p.m.
Building Rot 3
SAP-Allee 27
68789 St. Leon-Rot



Free Wi-Fi access is available to all participants:
Guest Username: **PLM_Event_2019**
Guest Password: **plm2019!**

(04/19)

© 2019 SAP SE or an SAP affiliate company. All rights reserved.

No part of this publication may be reproduced or transmitted in any form or for any purpose without the express permission of SAP SE or an SAP affiliate company.

These materials are provided for information only and are subject to change without notice. SAP or its affiliated companies shall not be liable for errors or omissions with respect to the materials.

SAP and other SAP products and services mentioned herein as well as their respective logos are trademarks or registered trademarks of SAP SE (or an SAP affiliate company) in Germany and other countries. All other product and service names mentioned are the trademarks of their respective companies. See <http://www.sap.com/corporate-en/legal/copyright/index.epx> for additional trademark information and notices.

THE BEST RUN

