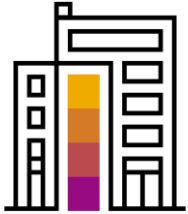




# SAP® Innovation Awards 2020 Entry Pitch Deck

Digital Boardroom Model for Trading and security companies



## Company Information

---

TCS is continuously innovating for its customers in various fields like manufacturing, retail, supply chain, finance, etc., As part of the innovations, TCS has created a Digital boardroom dashboard that can fit the requirements of trading and stock companies across the globe. This solution helps the customers to get more faster and reliable data.

# BW4HANA & Digital Boardroom

## Challenge

TCS is focusing on innovative and next generation solutions that helps their customer to gain operational excellence with apt and granular level deep business insights for managing, govern and handling their rich datasets. Aiding CIO Steering committees and leadership teams to take proactive decisions for handling any potential risk scenarios and adapt to dynamic business needs is critical for customer's strategic and future plans.

## Solution

Leveraging SAP BW/4HANA & SAP's next Gen Analytics solutions (SAC) for handling all data provisioning requirements. Many of our customers depends heavily on excel data files which periodically gets extracted (manually) from live systems and is persistently stored in BW for reporting needs (i.e., Month end reports, group KPI's for CIO Digital Boardroom).

## Outcome

Full Transparency, efficient & effective steering. Optimal handling and management of historical data volumes across various clusters. Clear Ownership and visibility of transactional data via Automation (There is no automate process to extract the transactional data for various streams like HR, Central Finance, SAP CRM, JIRA, Incident management tool and Network Devices).

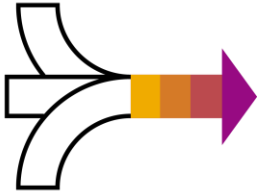


**25%**

Increase in  
efficiency in  
handling data  
from multiple  
source systems

**15%**

Improvement in  
overall reporting  
performance  
using the  
analytics in cloud



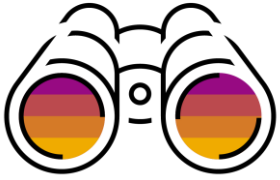
# Business Challenges and Objectives

## Challenges:

The CFO's Office wants to have a Real-time View of Complete company situation with Total Transparency and Instant Data driven Insights alongwith comprehensive view of key figures across different segments in the company. Data Management and sourcing data from disparate systems is a major challenge currently. Consolidation process and handling business logic is complex and also a major challenge. Customer's IS & Risk, CIO and IT Corporate teams have a major challenge handling the historical data & manually reporting them via Power Query. Additionally manual intervention for downloading this business critical data from various sources (CRM, Jira Platform & Excel based) adds to latency and erroneous data feeds. Customization and data handling gets complicated further while incorporating complex business semantics in the power query.

**Objectives:** Intuitive and powerful analytical exploration capabilities with simple user interface with ability to Drill down to lowest line item level in system of records and Answer ad-hoc questions and perform what-if analysis scenarios through data exploration and simulations.

To optimize and automate data streams and their consolidation to address all critical reporting needs. Optimize and streamline end to end process to aid business with apt visualization dashboards for end users across multiple domains and streams (i.e., Leverage Live system connects, optimal BW/4HANA models and data sources, defining complex authorizations, dynamic data tiering of datasets, etc.).



## Project or Use Case Details

Adopting cloud (Infra, IT systems and applications) has been a strategic and key decision for the customers over the years. Considering current SAP landscape, future roadmaps, existing analytical footprint and gaps, TCS came across these scenarios with many customers and helped to implement SAP Analytics Cloud (SAC) as their complete analytics solution in Cloud to cater to all their complex reporting needs.

TCS leveraged SAC (i.e., Information Security Cockpit Dashboard and CIO Digital Boardroom) by sourcing data from BW/4HANA for providing application rich data which gets consolidated from various source systems like SAP CRM, flat files and Jira Platform. Objective is to deliver dashboards comprising of at least 29 critical KPIs for Security Incidents, Risk, Measures, Vulnerabilities & Network devices information.

Phase 1 includes the following:

- Build Information Security SAC dashboard by connecting to various data sources like SAP CMR, Jira & Excel into BW/4HANA.
- Build CIO Steering Digital Boardroom for various clusters of HR, Budget, Findings, Assets, Projects, Releases by connecting to various source systems in the BW/4HANA backend.
- Write an automate code to extract data from Jira to HANA DB.



# Benefits and Outcomes

## Business or Social

- Empowers business users to make better decisions especially from the most complex data sets, formats that brought together through multiple acquisitions.
- Ability to simplify and extract the reliable data using SAP's cutting edge technologies.

## IT

- Live Digital boardroom & various Sub Reports.
- Monthly data files loaded into BW for front end reporting.
- No manual efforts needed to calculate the logic defined in front & backend.
- Authorization relevant for the specific users are defined in the backend with respect to different departments of customers.

## Human Empowerment

Ability to reduce the human effort to cleanse the data from multiple organizations that were brought together through acquisitions.

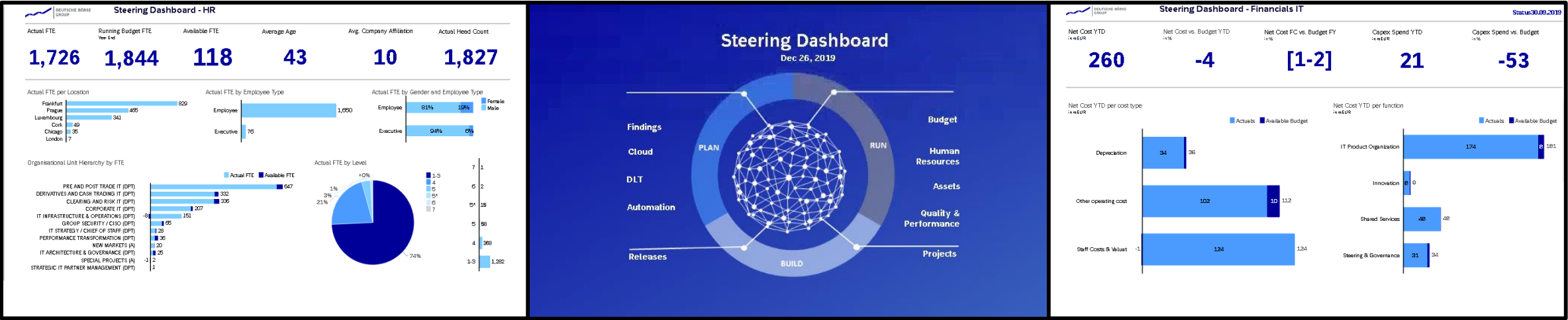
Provide the single view of data that can be used for analytics.

# CIO Digital Boardroom Clusters

HR

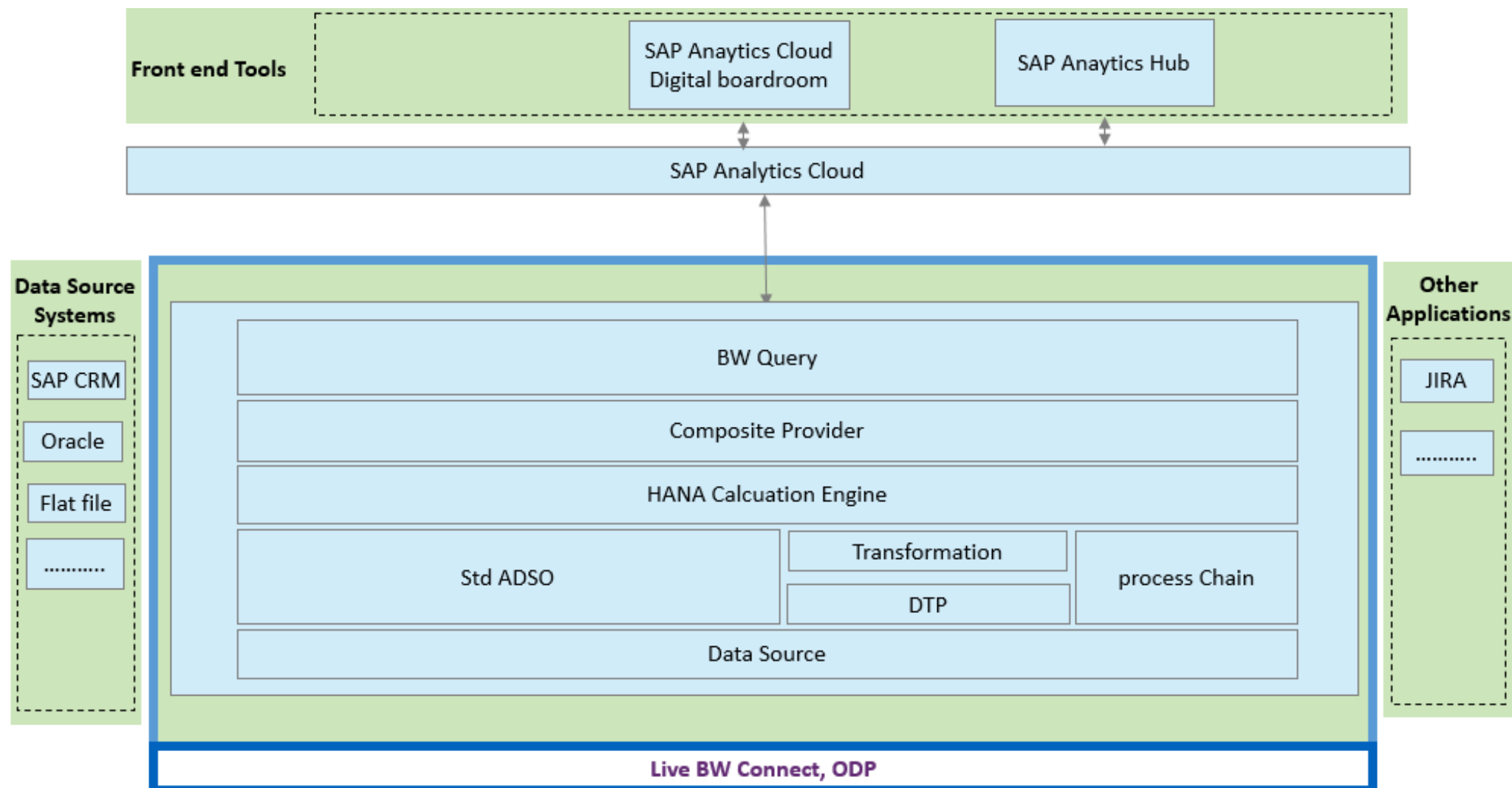
Overview

Financials





# Architecture







# Deployment



**Deployment status** PoC

**Date** March 2020 **Number of users** 20

**SAP technologies used:**

SAP product	Deployment status (live or proof of concept [POC])	Contribution to project
1 SAP BW/4HANA	PoC	The enterprise level warehouse and analytical platform to implement analytical modelling & extract data from SAP CRM, flat files, Jira.
2 SAP Analytics Cloud	PoC	Helps to design rich visualization of reports & Digital Boardroom.

If you have used one of the services or support offerings from SAP Digital Business Services during the implementation or deployment phase, please select with ☒ one or more of the following offerings:

- ☐ SAP MaxAttention™
- ☐ SAP ActiveAttention™
- ☐ SAP Advanced Deployment
- ☐ SAP Value Assurance
- ☐ SAP Model Company
- ☐ Others:
- ☐ SAP Innovation Services
- ☐ SAP Innovative Business Solutions



# Advanced Technologies

The following **advanced technologies** were part of the project.

	Technology or use case	Yes or No	Contribution to project
1	3D printing		
2	Blockchain		
3	Internet of Things (IoT)		
4	Machine learning or AI		
5	Conversational AI		
6	Robotic process automation		
7	Data anonymization		
8	Augmented analytics	Yes	Using SAP Analytics Cloud Digital Boardroom and SAP B/4HANA platforms