



# SAP Innovation Awards 2019 Entry Pitch Deck

EY Digital Boardroom for Waste and Recycle Management

EY

# SAP Analytics Cloud Implementation

## Waste and Recycle Management companies



“EY has developed different cases in the digital boardroom on functional (e.g., Finance, Tax, Risk) and sector-specific perspectives (e.g., Media and Entertainment), in order to discuss and analyze the presented data.

Further, the lab offers an opportunity to experiment with live data for the purpose of promoting real-time decision-making, simulation and visualization.

The lab creates an environment for visitors to get a glimpse into the future of finance and experimental technologies that will help clients manage various real-life business scenarios.”

- Tristan Werner, Partner, Digital Business Services, Ernst and Young GmbH

### Challenge

Waste and Recycle Management companies have no accurate and actual view of their most important Key Performance Indicators (KPIs). Furthermore, the reporting is based on data siloes between Finance, Sales and other departments and is mainly Excel-based. This could lead to miscommunication and suboptimal decision-making.

### Solution

SAP Analytics Cloud is the single centralized location to access reporting from across an entire organization quickly and easily. Real-time data paired with a matured KPI library, single sign-on and a sophisticated data governance model, leads to immediate and informed decisions at any time, and secure from anywhere. The end product is a “single source of truth” for all the reporting and analytics need across the organization.

### Outcome

Management and business process owners gain immediate access to the most relevant figures. They no longer need to invest manual effort in generating meaningful dashboards. This not only allows for an accurate and real-time overview of financial and operational figures, but also allows for faster and better decision-making. There is also more consistency in the financial reporting toward public and private shareholders.

Completely eradicate the time it takes for management reporting turnaround, remove all indecision of the data quality process and accuracy of the information.

Remove all barriers and siloes from your data. Complex environments become seamless and contextual information drives better decisions.

Improved communication between management and different service lines by the built-in collaborative features in SAP Analytics Cloud.



## Partner Information

**EY**

### SAP Analytics Cloud Implementation Partner



EY is a global leader in Assurance, Tax, Transaction and Advisory Services (TAS). The insights and quality services we deliver help build trust and confidence in the capital markets and in economies the world over. In a world of unprecedented change, EY Advisory professionals believe a better working world means helping clients solve big, complex industry issues and capitalize on opportunities to grow, optimize and protect their businesses. EY Advisory professionals work with clients — from strategy through execution — to help them design better outcomes and realize long-lasting results.

Ernst & Young LLP (United States) is a client-serving member firm of Ernst & Young Global Limited, operating in the US.

The better the question. The better the answer. The better the world works.



## Business Challenge & Objectives **Business challenges and objectives**

Waste and Recycle Management companies have no accurate and actual view of their most important Key Performance Indicators (KPIs). Furthermore, the reporting is based on data siloes between Finance, Sales and other departments and is mainly Excel-based. This could lead to miscommunication and suboptimal decision-making.

Example: A waste and recycle management company needs to pick up the waste that is illegally dumped in the city. The city itself made an application to allow citizens to send notifications of fly-tipping cases, however, the company's back office could not follow up. Moreover, the company had no concrete view on how many notifications came in, where the fly-tipping hotspots in the city were and how much waste was picked up in the end.

- Organization-wide cloud-based analytics solution for management reporting:
  - Track and monitor the service-level agreement (SLA) within any city with regard to the cleaning of the city.
  - Other KPI metrics in Operations, Sales and Finance.
- Real-time overview of KPIs to allow faster and better decision-making.
- Reduce manual effort to harmonize data and to get insights based on data that were mainly coming from their Enterprise Risk Management (ERP) system.



## Project/Use case details

SAP Analytics Cloud Implementation for Waste Management was based on the SAP data, with regard to fly-tipping cases. EY put together a story in SAP Analytics Cloud, with among others:

- **A Geo-map** showing the fly-tipping hotspots; allowing the city to do targeted intervention and control in these areas
- **Average lead time of every case:** showing whether the existing SLA between waste and recycle management companies and the city has been met
- **Forecast** of how much waste will need to be picked up in the coming weeks/months.

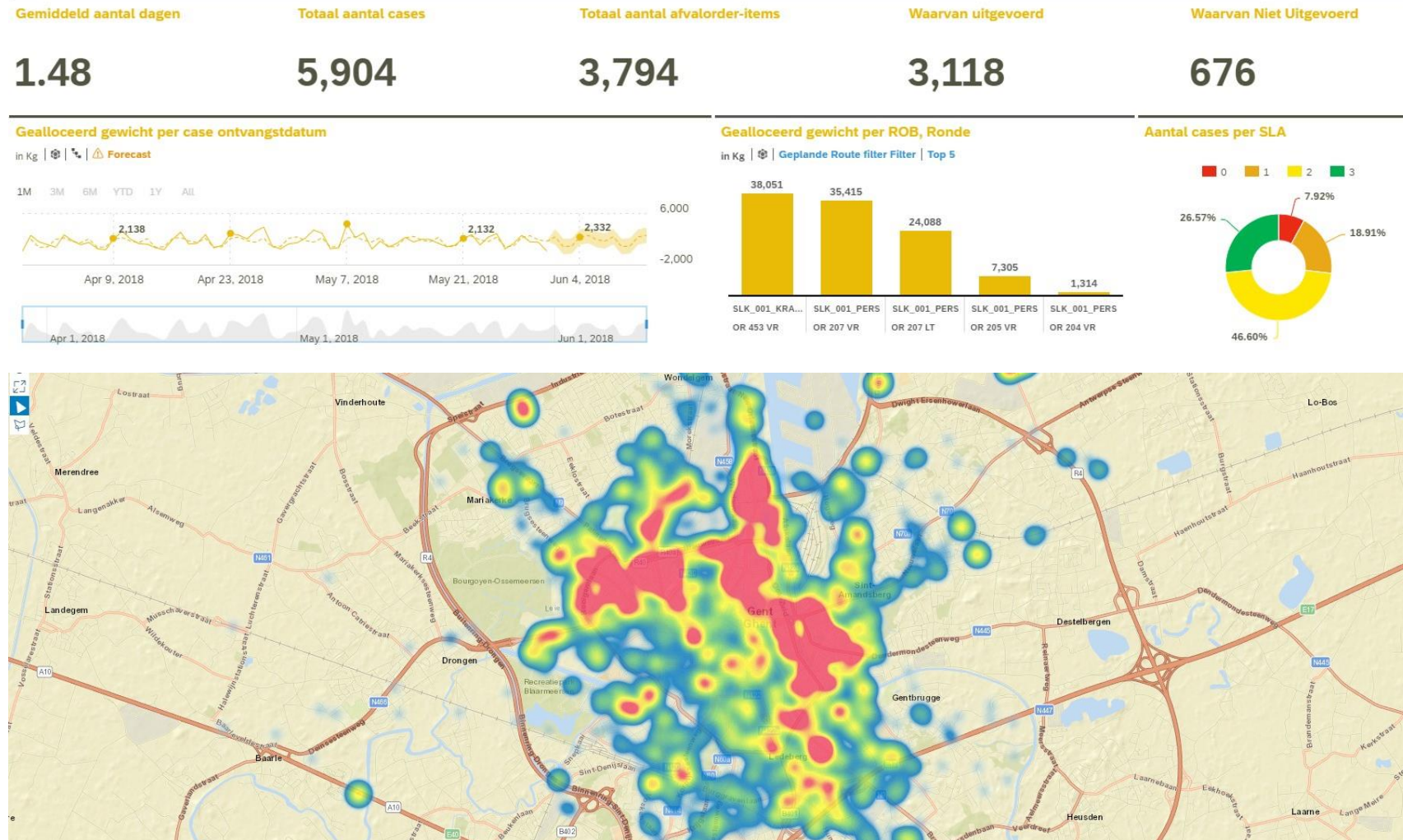
Technical details:

- Data replication from SAP HANA database on premise to SAP Cloud Platform
- SAP Cloud platform mainly used as data harmonization platform
- Live connections between:
  - SAP Cloud Platform and SAP Analytics Cloud
  - SAP HANA and SAP Analytics Cloud



# Project/Use case details

Examples of stories in SAP Analytics Cloud:





# Benefits and outcomes

## Business/Social

- Management has real-time insight into backlogs of different departments, allowing them to faster intervene when the backlog gets too high
- Social outcome: Allowing the city to do targeted interventions and controls in areas where the most waste is dumped.
- Outcome: Cleaner city

## Information Technology (IT)

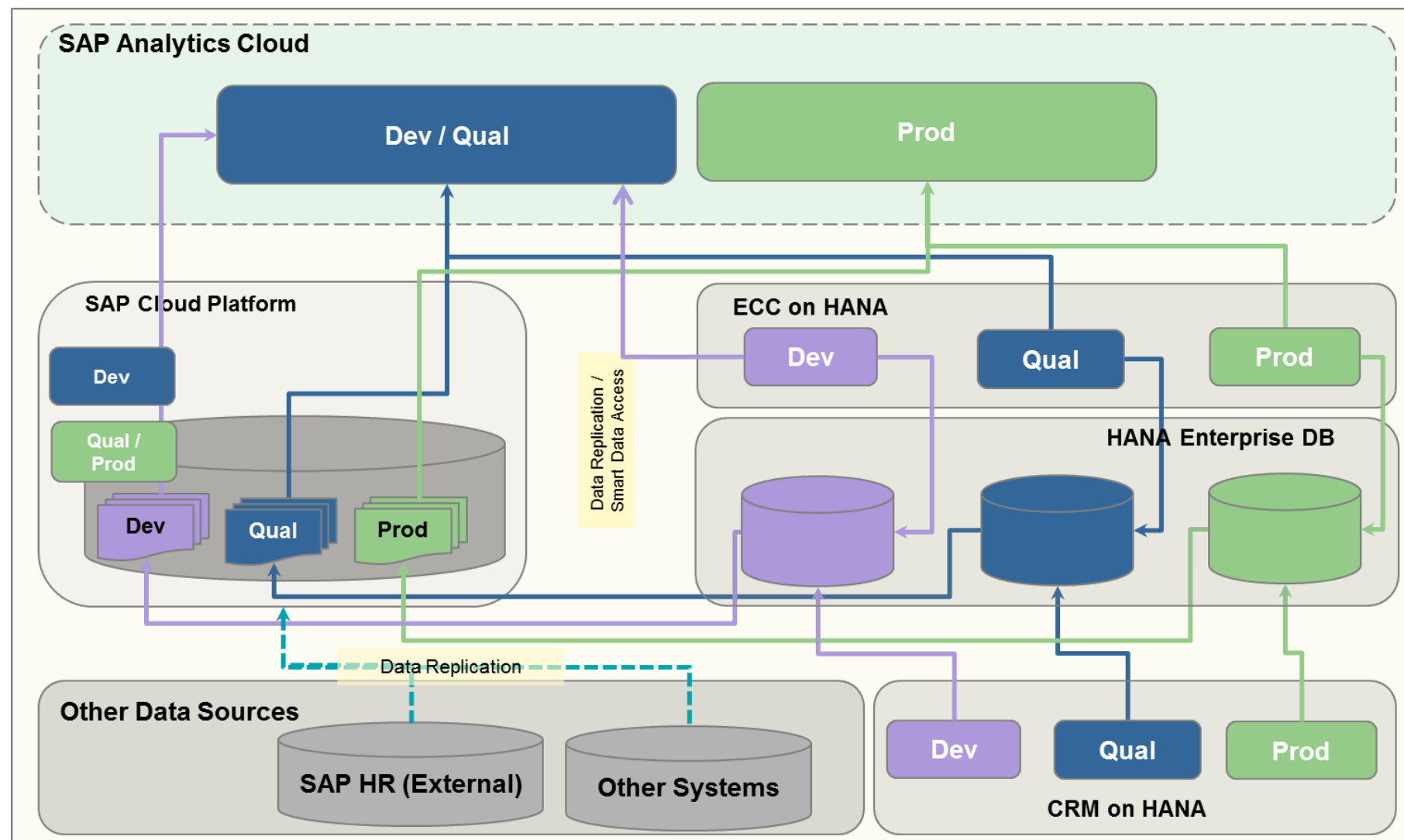
- Streamlined and state-of-the-art ERP and Business Information (BI) landscape, leveraged by SAP technology, with better performance and less maintenance efforts and costs, as a consequence.
- By using the Live Connection between HANA (on premise) and the SAP Analytics Cloud, confidential data is consumed but not replicated into the cloud.

## Human empowerment

- Improved communication between management and different service lines by the built-in collaborative features in the SAP Analytics Cloud
- Less time is spent on repetitive tasks to manually consolidate data and make meaningful dashboards based on this data



# Architecture





## Deployment

Date of deployment or Proof of Concept (PoC) February 2019

Number of live users: 80

### SAP Technologies used:

Product	Live/PoC
SAP Analytics Cloud	Live
SAP Cloud Platform	Live
SAP HANA	Live

Server processor: Unknown

Linux distribution: Unknown



## Emerging Technologies and use cases

The following Emerging Technologies and use cases are part of the project. The contribution is described here:

	Technology or Use Case	Yes/No	Contribution to Project
1.	Machine Learning / Artificial Intelligence	Yes	Developing the smart insights through the ML, AI features (Smart Discovery) on the dashboards.
2.	IoT	No	
3.	3D printing	No	
4.	Blockchain	No	
5.	API Economy / Integrate the Intelligent Enterprise	No	
6.	Cloud Native / Event-Based Architectures		
7.	Extending the digital core with SAP CP / ABAP in SAP CP	Yes	Supporting the SCP for integration and custom development for core ERP (extensions).
8.	SAP Leonardo Application (extending SAP application, using Industry Innovation Kits or result of Design Thinking workshop)		

EY | Assurance | Tax | Transactions | Advisory

## About EY

EY is a global leader in assurance, tax, transaction and advisory services. The insights and quality services we deliver help build trust and confidence in the capital markets and in economies the world over. We develop outstanding leaders who team to deliver on our promises to all of our stakeholders. In so doing, we play a critical role in building a better working world for our people, for our clients and for our communities.

EY refers to the global organization, and may refer to one or more, of the member firms of Ernst & Young Global Limited, each of which is a separate legal entity. Ernst & Young Global Limited, a UK company limited by guarantee, does not provide services to clients. For more information about our organization, please visit [ey.com](https://www.ey.com).

© 2019 EYGM Limited.

All Rights Reserved.

EYG no. 000504-19Gbl

ED (as applicable)

This material has been prepared for general informational purposes only and is not intended to be relied upon as accounting, tax or other professional advice. Please refer to your advisors for specific advice.

[ey.com](https://www.ey.com)