

SAP Solution Brief | PUBLIC

SAP Solution Extensions | SAP Asset Information Workbench by Prometheus Group

Optimize Enterprise Asset Management to Support Digital Business



Use Accurate Data to Streamline Asset Deployment

In an asset-intensive industry, your organization must ensure machinery is in the best condition to provide optimal performance. You need to **manage and integrate asset master data and documents** from a variety of sources to give your maintenance team the resources it needs. The SAP® Asset Information Workbench application by Prometheus Group can help.

The application, available both on premise and in the cloud, enables you to create and maintain comprehensive information about an asset from internal and external sources in one dashboard.

In large-scale manufacturing, processing, or engineering operations, the efficient management and deployment of assets is vital. By having fast, real-time access to expert repair and maintenance teams, you can maintain safe work practices, run an optimal facility, and maximize your resources. And providing complete information that includes structured data and unstructured content,

combined in one clear view, can contribute to more efficient and collaborative processes.

SAP Asset Information Workbench is built on the foundation of the SAP Master Data Governance application, enterprise asset management extension by Prometheus Group, and it integrates with SAP Business Network for Asset Management. Thus, you can simplify asset master data governance from one central view and reduce the time to create or maintain complex hierarchical data structures with intuitive drag-and-drop capabilities.

Use Accurate Data to Streamline Asset Deployment

You can govern complex, interrelated structures within your enterprise asset management system using SAP Asset Information Workbench. The capabilities of SAP Master Data Governance enable a centralized and streamlined approach for reliably managing asset data across your enterprise.

You can define rules for new data or maintained data to apply the rigors of complete and consistent validation to every field. Furthermore, those who need to review or approve the data are directed to do so by automatically generated workflows.

Using SAP Asset Information Workbench, you can create, copy, or maintain the entire structure, which typically comprises multiple levels of functional locations, equipment and subequipment hierarchies, bills of materials, maintenance plans, unstructured documents, and more, within one multiobject change request. Here, the integrity and completeness of the structure's composition is automatically reviewed while the data is still in work-in-progress status. The back-end systems are not updated until the stringent business rules are satisfied and reviews and approvals are completed.

Use Accurate Data to Streamline Asset Deployment

Visualize Asset Information from One Intuitive Interface

With SAP Asset Information Workbench, you get a staging area for asset master data that gives your maintenance teams the information they need when they need it. You can share, visualize, compare, modify, review, and approve asset data among systems of record, including the plant maintenance functionality in SAP S/4HANA®, content management systems, geographic information systems, and engineering design systems. You can also support smooth drag-and-drop modifications with embedded business rules and auditable business processes.

Large-scale changes to your as-built assets can require remediation of critical asset master data. SAP Asset Information Workbench lets you maintain, revise, and review master data modification projects in the staging area for long-duration activities such as capital projects or for short-duration activities such as field data remediation. When the master data modifications are fully approved, the application facilitates posting of the revised asset data to the systems of record through appropriate management-of-change mechanisms.

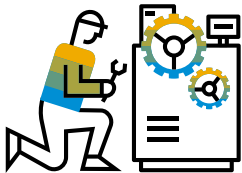
Visualize Asset Information from One Intuitive Interface

Enhance Maintenance Execution with a Best-Practice Library

Collaborate with the Right Expertise and Insight in Real Time

Synchronize Asset Master Data and Documents in One Place

You can readily review maintenance strategies and select maintenance plans, task lists, bills of materials, material lists, and more, dragging the information into place in a visual hierarchy. Additionally, intuitive hierarchy processing includes search, copy, and replace across enterprise asset management master data elements. You can quickly create new master data hierarchies through simplified copy and adapt functionality. You can then invoke configured workflows and business rules for master data validation and approval.



Simplify the organization and approval of the maintenance information and supporting documents required to empower your maintenance team.

Built-in customization options help ensure that no matter how large your project is, you can accommodate the necessary review and approval processes for complex asset master data scenarios.

To facilitate integration of existing capabilities within each domain and enable further synchronization, you can access multiple systems of record for asset master data through one front end. Advanced interactive search capabilities mean searching for and editing complex asset data sets is faster and easier than before. The [figure](#) on the next page shows integration points for SAP Asset Information Workbench.

Visualize Asset Information from One Intuitive Interface

Enhance Maintenance Execution with a Best-Practice Library

Collaborate with the Right Expertise and Insight in Real Time

Synchronize Asset Master Data and Documents in One Place

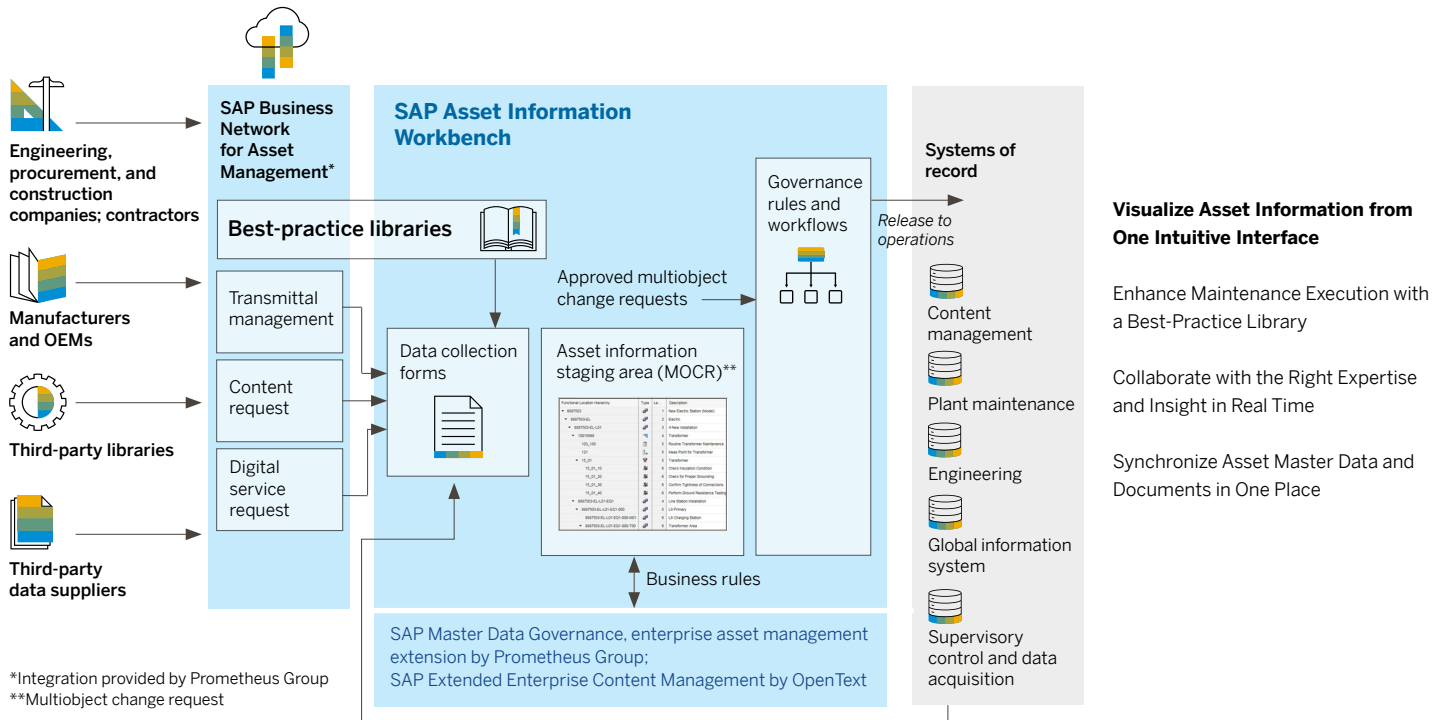


Figure: Integration Points for SAP Asset Information Workbench

Enhance Maintenance Execution with a Best-Practice Library

With support for compliance and process continuity at its core, SAP Asset Information Workbench allows you to create, maintain, and deploy a best-practice library for asset maintenance across your organization. Built to ISO 55001 and ISO 14224 standards, the application lets you create and use templates for standard bills of materials, inspection plans, material or task lists, and more. This helps ensure standard maintenance practices across multiple systems and plants.

When you create new maintenance data, you can apply reusable templates and build up your library of workflows and business rules to facilitate uniform application of maintenance standards. Built-in audit-trail reporting is activated when you make exceptions to standards.

When substantial changes occur, such as the introduction of new inspection standards, you are prompted to make required changes and revise deployed maintenance data to relevant situations. This way, your best-practice library stays up to date and gives you ongoing enterprise configuration control and governance of deployed maintenance best practices.

You can also build, govern, and deploy broader groupings of maintenance objects from your best-practice library to provide reusable “standard plant” models, giving you the ability to reuse complex maintenance configurations for similar asset installations.

Visualize Asset Information from One Intuitive Interface

Enhance Maintenance Execution with a Best-Practice Library

Collaborate with the Right Expertise and Insight in Real Time

Synchronize Asset Master Data and Documents in One Place

Collaborate with the Right Expertise and Insight in Real Time

Because SAP Asset Information Workbench integrates with SAP Business Network for Asset Management, you gain bidirectional exchange of data that is compliant with building information modeling or of proprietary building design data. Such data can include equipment specifications, maintenance task lists, and recommended spare parts lists with the asset designer, builder, and supplier community. This also includes

unstructured information such as maintenance manuals and operating procedures.

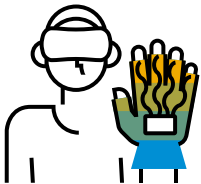
You can search, review, and retrieve this structured and unstructured asset master data provided by the network, thanks to the preconfigured user interfaces in SAP Asset Information Workbench.

Visualize Asset Information from One Intuitive Interface

Enhance Maintenance Execution with a Best-Practice Library

Collaborate with the Right Expertise and Insight in Real Time

Synchronize Asset Master Data and Documents in One Place



SAP Master Data Governance helps you send the **right person to the right job** at the right time with the right equipment, tools, and training.

SAP Asset Information Workbench is natively built on the same foundation as SAP Master Data Governance, enterprise asset management extension by Prometheus Group. This allows automated download, transformation, and incorporation of asset master data provided by SAP Business Network for Asset Management

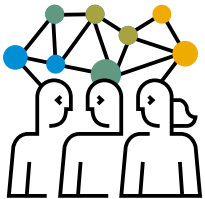
into your existing plant maintenance environment. The two solutions combined give you one integrated view of your master data assets across systems – whether you're making individual change requests or simple approvals, or creating requests across thousands of objects at once.

Visualize Asset Information from One Intuitive Interface

Enhance Maintenance Execution with a Best-Practice Library

Collaborate with the Right Expertise and Insight in Real Time

Synchronize Asset Master Data and Documents in One Place



Use SAP Business Network for Asset Management to collaborate with asset **designer, builder, and supplier** communities.

Synchronize Asset Master Data and Documents in One Place

In a world of structured and unstructured information, SAP Asset Information Workbench enables improved maintenance and operations decision-making and enhanced productivity through synchronization with master data and content management systems. The intuitive front end of the enterprise asset management extension of SAP Master Data Governance allows

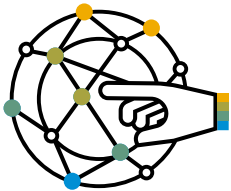
you to integrate with supporting systems as required and makes this synchronization become a reality. Advanced user interface capabilities of the enterprise asset management extension, such as drag and drop and cut and paste, improve your master data governance productivity. In addition, you can complete complex multiobject change requests or large-scale master data changes.

Visualize Asset Information from One Intuitive Interface

Enhance Maintenance Execution with a Best-Practice Library

Collaborate with the Right Expertise and Insight in Real Time

Synchronize Asset Master Data and Documents in One Place



Benefit from synchronized asset master data and content management systems, and greatly **improve productivity**.

Integration with the SAP Extended Enterprise Content Management application by OpenText allows you to create composite transactions to harmonize structured data and unstructured content through predesigned workflows. And you can build master data objects through integration with SAP Business Network for Asset Management; you can browse vendor catalogs and select and download master data to populate your plant maintenance objects.

In addition, you can generate and maintain bills of material and material master data objects from recommended spare parts lists provided by engineering, procurement, and construction companies (EPCs), suppliers, and OEMs. You do this in an electronic spare parts interchangeability record, or E-SPIR, format. Similarly, you can create equipment master data objects from engineering design data sets provided by EPCs, suppliers, and OEMs in native computer-aided design formats and translated by SAP 3D Visual Enterprise applications.

Visualize Asset Information from One Intuitive Interface

Enhance Maintenance Execution with a Best-Practice Library

Collaborate with the Right Expertise and Insight in Real Time

Synchronize Asset Master Data and Documents in One Place



Avoid the likelihood of events that may incur compliance penalties, legal costs, or reputational damage for violating government regulations, with **proper maintenance assets**.

Get One Complete View of Asset Master Data and Documents

In asset-intensive industries, managing asset master data can deliver major organizational advantages. By providing consistent, synchronized data from systems of records, accessible from one view, you can reduce both environmental and health and safety risks, improve operational performance, and maintain regulatory compliance.

Access to consistent, accurate information such as manuals, design specifications, and more can give your maintenance employees the insight they need to perform their duties. And you can complete important phases such as design and

commissioning with the confidence that comes from working with proven insight.

You can access uniform master data, helping ensure data consistency and accuracy. Tracking and monitoring each aspect of your maintenance work gives you peace of mind in today's regulatory environment, and you can reduce downtime with this renewed focus on plant availability. Shop-floor productivity improves, while an optimized supply chain for maintenance, repair, and operations connected from the shop floor can also increase efficiencies.

Get One Complete View of Asset Master Data and Documents



Using the enterprise asset management extension of SAP Master Data Governance, you can set consistent definitions of data to help **reduce maintenance inventory costs**.

Summary

Adopting a solution that supports comprehensive asset information management gives your asset-intensive industry an optimized platform to maximize return on investment. The SAP® Asset Information Workbench application by Prometheus Group helps your maintenance team collaborate with external asset information suppliers as well as internal systems of record. And team members use one set of centralized accurate master data to help them maintain and service enterprise assets.

Objectives

- Access one set of master data from various systems, from one view
- Get faster, real-time access to accurate asset information
- Automate operational processes
- Standardize service delivery across the enterprise
- Meet compliance needs and safety targets

Solution

- Centralized master data staging area for simplified processes
- Best-practices library
- Integration with SAP Business Network for Asset Management
- Integration with systems of record such as the plant maintenance functionality in SAP S/4HANA® and content management systems

Benefits

- Access to complete, consistent asset master data
- Increased collaboration with key stakeholders
- Reduced risk of safety and compliance incidents
- Improved plant availability and less downtime
- Enhanced shop-floor productivity and a streamlined supply chain

Learn more

For more information, call your SAP representative or visit us [online](#).



